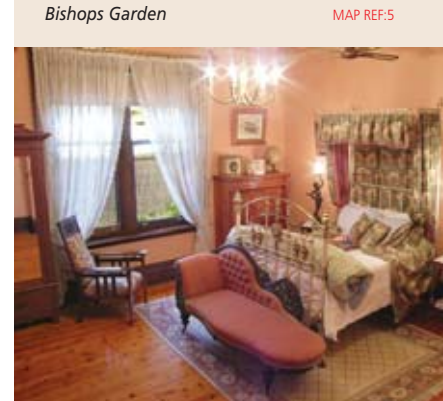




MERCURE GROSVENOR HOTEL ★★★^{1/2}

This 5-story 243 room hotel is located in the hub of Adelaide's entertainment and shopping district, opposite the Convention Center, Casino & Festival Center. The hotel is ideally positioned for leisure and business travelers with its location adjacent to Adelaide's business and retail areas. The Federal Bar & Restaurant looks out over North Terrace and is open daily for all meals.

MAP REF:1



NORTH ADELAIDE HERITAGE APARTMENTS

With some of Adelaide's best architecture, the North Adelaide Heritage group offers a choice of fine places to stay such as the lavish Buxton Manor on a half acre of rose garden, romantic Friendly Meeting Chapel, Fire Station Inn and Bishops Garden. Each apartment is appointed with beautiful antiques. These unique self-contained accommodations are a wonderful way to enjoy cosmopolitan Adelaide. All properties offer personalized service and access to a free shuttle bus to the city. Meal delivery service is available from several good local restaurants. Gourmet breakfast supplies are included.

MEDINA GRAND ADELAIDE TREASURY ★★★★★



Medina Grand Adelaide Treasury is superbly located in Adelaide's central business district. The historic former Treasury building overlooks Victoria Square and is just three blocks from Rundle Street Mall. Just minutes from the delights of Adelaide's Central Market and the Botanic Gardens. Opposite the hotel you can catch a tram to the beachside suburb of Glenelg.

MAP REF:2

THE SEBEL PLAYFORD ADELAIDE ★★★★★



Adelaide's boutique luxury five star hotel, The Sebel Playford is located in the heart of the city. It's close to the Adelaide Casino, Festival Theater, shopping and restaurants. Combining classical style and contemporary luxury, here you'll find modern facilities, superb service, exquisite cuisine and a room or suite as comfortable as it is luxurious.

MAP REF:3



ADELAIDE CITY SIGHTS

This is an ideal tour to see Adelaide's main attractions. Enjoy lots of photo opportunities at Colonel Lights Lookout, Adelaide Oval, St Peters Cathedral and the Botanic and Zoological Gardens. Visit Glenelg Beach and cosmopolitan precinct as well as family-owned Haighs Chocolate Factory where you can sample mouth-watering chocolates (Mon-Sat only). The guides will share their local knowledge and passion of the best places to visit, including restaurants and cafés and what's happening around town.

Tour Code: AS14



BAROSSA VALLEY EXPERIENCE

The rich European heritage of Australia is embodied in the lifestyle of the Barossa. Spend the morning admiring breathtaking backdrops and panoramic views with fantastic photographic opportunities looking out onto the Barossa Valley. Enjoy lunch at an old villa set back from the road and spend the rest of the day among the vineyards and wineries that make this area so popular and famous around the world.

Tour Code: BVE