



^ Shanghai at dawn

## SHANGHAI SIGHTSEEING



### Wuxi Full Day Tour

Board the morning train to Wuxi. Enjoy a cruise on Taihu Lake before visiting Xihui Park. See famous sights such as the Ming Dynasty Jichang Garden and climb the Dragon Light Pagoda which stands seven stories high with panoramic views of Wuxi and Taihu. Continue to Turtle Head Isle Park, where you can watch the junks on Taihu Lake or

take a stroll along the shore to the Three Hills Isle. Return to Shanghai by train. Tour is 12 hours and includes hotel transfers and lunch.



### Suzhou Full Day Tour

Depart your hotel early to join the morning train to the picturesque city of Suzhou. Visit Tiger Hill, which was erected in the 10th century, the ancient Grand Canal Garden and a silk factory. Lunch at a local restaurant is included. Your return train leaves at about 4:30pm and arrives in Shanghai one hour later.

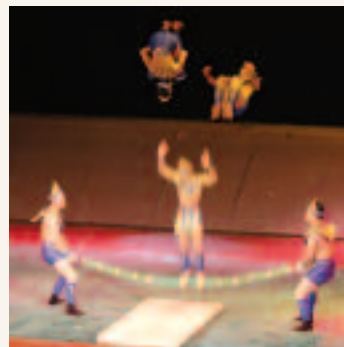
Tour is approximately 11 hours and includes hotel transfers.



### Huangpu River Cruise

The Huangpu River is the city's shipping artery both to the East China Sea and to the mouth of the Yangtze River. On your cruise of this important waterway, you will see the stately colonial buildings along the Bund, the glittering skyscrapers on the eastern shore of Pudong and the unceasing river traffic. After your

cruise you will be transferred back to your hotel. Cruise is 1 hour and includes hotel transfers.



### Evening Acrobatic Show

You will be picked up from your hotel at approximately 7:00pm and transferred to the theatre to see this unforgettable show. Chinese Acrobatics is one of the oldest performing arts, dating back thousands of years. Be captivated by the amazing feats for 1½ hours before being transferred back to your hotel.



### Being Shanghaiese For Half A Day

Experience the culture of this fascinating city as a local. Visit a kindergarten and see how children study before they go to elementary school. Then journey to a local market to see people bargain to buy meat, fish and vegetables. Spend some time with a local family before returning to your hotel. Tour is 2 hours and includes hotel transfers.



### Full Day Shanghai Tour

This tour takes you to the highlights of this massive city of over 12 million people. Visit the delightful Yu Garden, famous for the wonderful combination of stone and water, the Jade Buddha Temple with its two fine milk white Buddha images and the bustling waterfront area of the Bund, with its magnificent European styled buildings — many dating

from the late 1800s and early 1900s. Tour is 8 hours and includes hotel transfers and lunch.